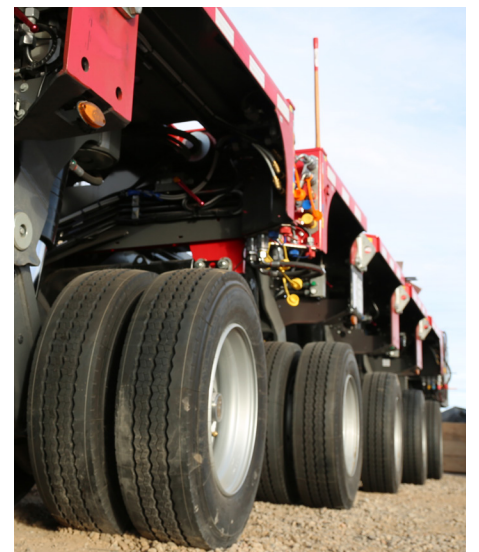
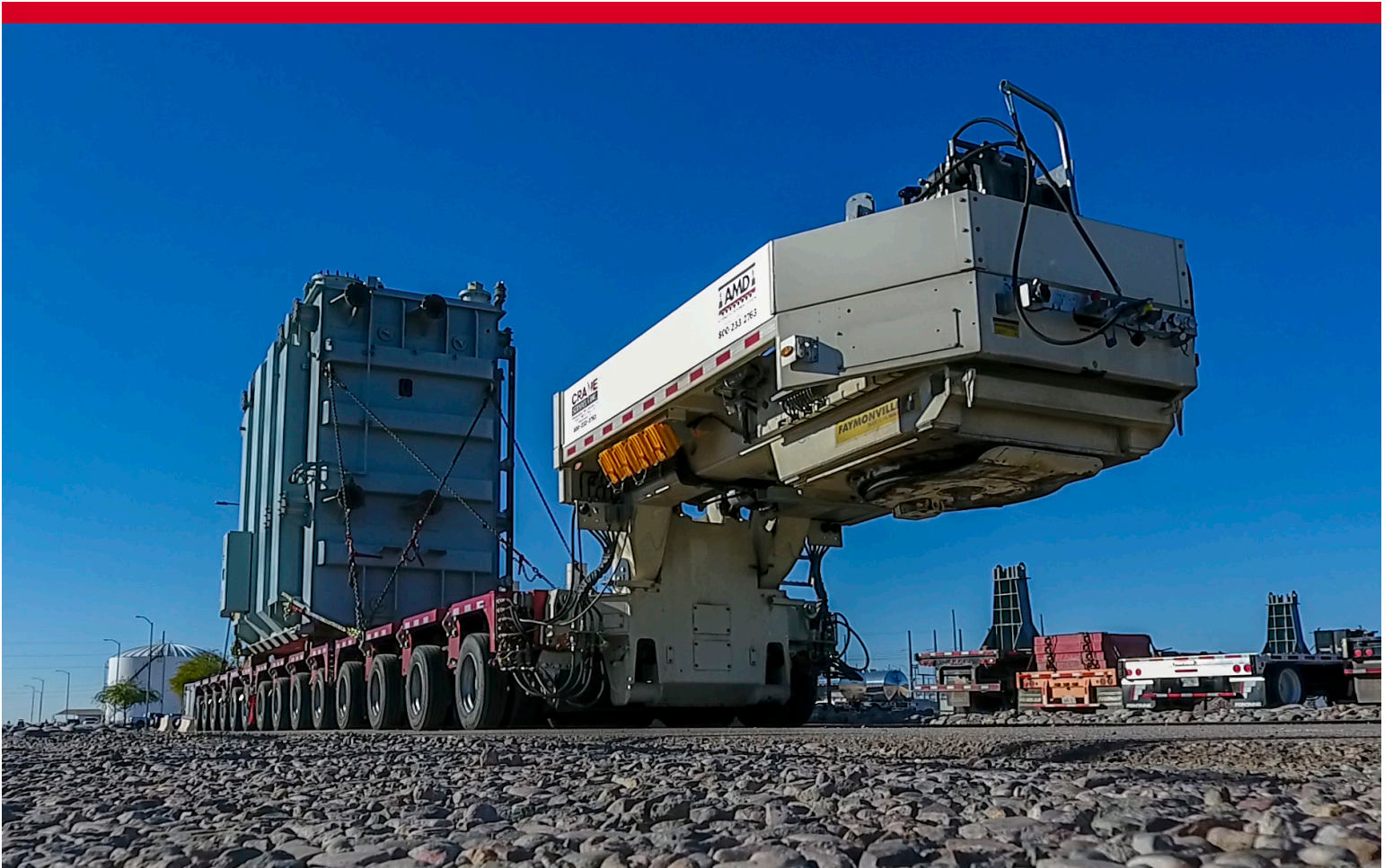




FAYMONVILLE MODULMAX APMC

SELF-PROPELLED MODULAR PLATFORM TRAILERS



WINSLOW CRANE SERVICE CO.
3002 S. Huron Street - Englewood, CO 80110
www.winslowcrane.com

Call us today for a free quote
303-761-3183



From trailers, gantries, slide systems, to custom engineered products; AMD is proud to provide alternative movement solutions to all M-L Crane Group customers. **Contact us to learn more about how AMD can solve YOUR alternative movement needs.**

FAYMONVILLE MODULMAX APMC

SELF-PROPELLED MODULAR PLATFORM TRAILERS

The Faymonville APMC system is a unique trailer concept in the market. APMC means: Assist & self-propelled modular trailer with conventional steering.



FEATURES

- Axle loads of up to 36 t per axle line
- Hydraulic axle compensation with a stroke of up to 650 mm
- Pivot-mounted bogie with 60° steering angle
- Strengthened loading area outer fields with point loads of up to 50 t
- New EP (electro-proportional) control system on drive axles with easy enabling and disabling of individual drive axles in order to improve system consumption and components' life time.
- Speed monitoring on all drive axles protects them against wheel-spinning.



ACCESSORIES

Various accessories are available to adapt your modular trailer to its particular transport application:

- Power-packs with Diesel engine from 228 kW to 360 kW
- Control panels
- Draw-bars (2,0 m-5,0 m) with Ø50 mm or Ø90 mm towing eyelet
- Formed closed load stoppers
- Detachable hydraulic ramps
- Steering remote controls (with cable or wireless)
- Hydraulic coupling pin



WINSLOW CRANE SERVICE CO.
3002 S. Huron Street - Englewood, CO 80110
www.winslowcrane.com

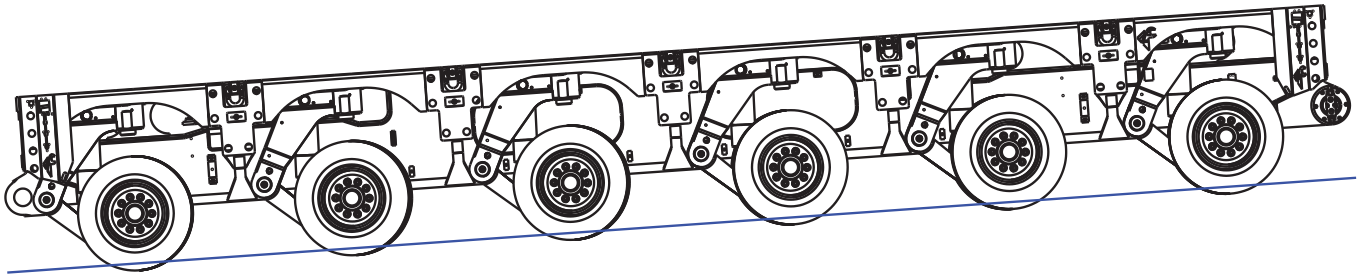
Call us today for a free quote
303-761-3183

FAYMONVILLE MODULMAX APMC

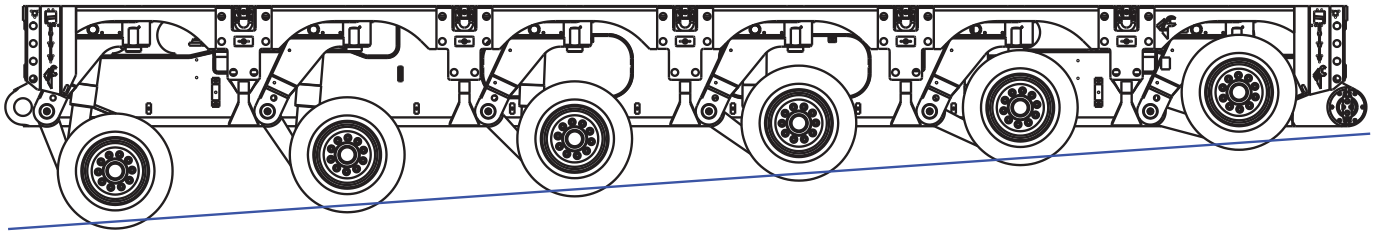
SELF-PROPELLED MODULAR PLATFORM TRAILERS

ModulMAX modules are suitable for the transport of the following goods:

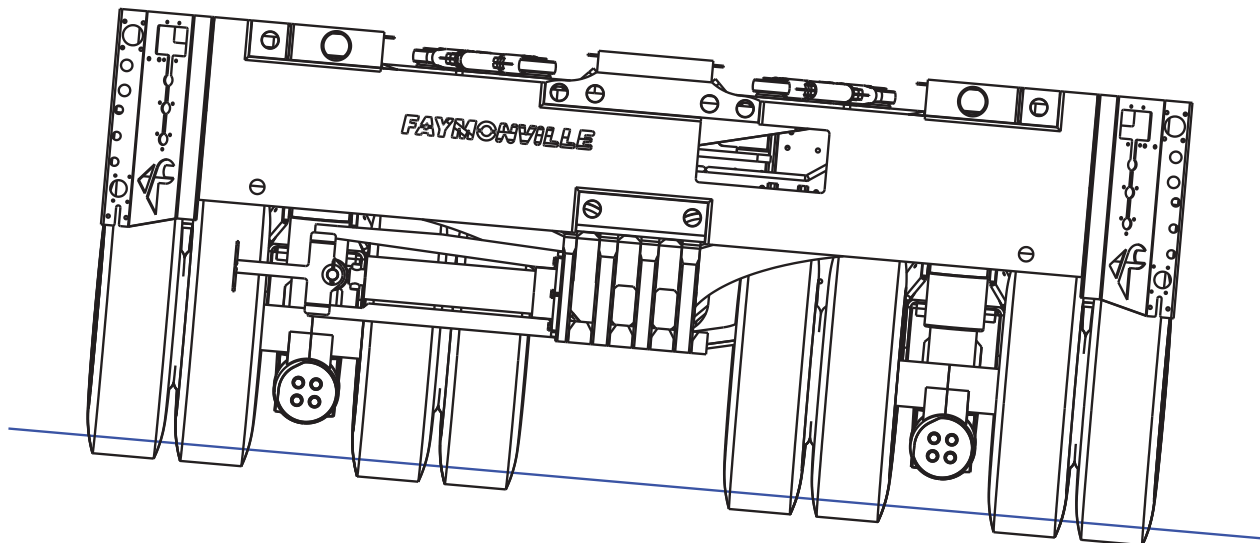
- Heavy construction machines
- Structural elements
- Industrial parts
- Crane systems
- Power stations
- Bridge elements
- Bulky goods, long materials and heavy loads
- Conveying and crushing systems
- Pipeline elements
- Offshore structures
- Ships or parts of ships



6-axle module with longitudinal tilt



6-axle module with longitudinal compensation



6-axle module with transverse tilt

WINSLOW CRANE SERVICE CO.
3002 S. Huron Street - Englewood, CO 80110
www.winslowcrane.com

Call us today for a free quote
303-761-3183

FAYMONVILLE MODULMAX APMC

SELF-PROPELLED MODULAR PLATFORM TRAILERS

TRAILER MODE (with drive system deactivated)

In the trailer mode the APMC bogies have the same characteristics as MODULMAX trailers of the corresponding type. The pulling force is generated exclusively by the truck, while the APMC is in the free wheeling mode.



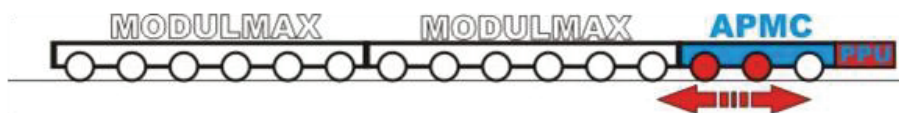
ASSIST MODE

In the assist mode the powerpack (PPU) and drive installed in the APMC are active, and below a certain speed assist the truck(s) as required. The level of assistance (pulling force of the APMC) can be selected between "ZERO" and "MAX" in a continuously variable manner using the remote control unit. If the speed rises above the threshold value, the assistance provided by the APMC is automatically disconnected, and the APMC switches automatically to the free wheeling mode (stand-by).



SELF-PROPELLED MODE

In the self-propelled mode the APMC replaces the truck(s) and provides the sole means of propulsion of a vehicle combination. In this mode the driving speed and braking force of the APMC can be selected between "ZERO" and "MAX" in a continuously variable manner. The brakes and steering of the whole vehicle combination are controlled from the APMC, or from its remote control unit.



WINSLOW CRANE SERVICE CO.
3002 S. Huron Street - Englewood, CO 80110
www.winslowcrane.com

Call us today for a free quote
303-761-3183